



90 Knavesmire Crescent
York, YO23 1EU
£1,395 Per Month

AVAILABLE END OF JULY

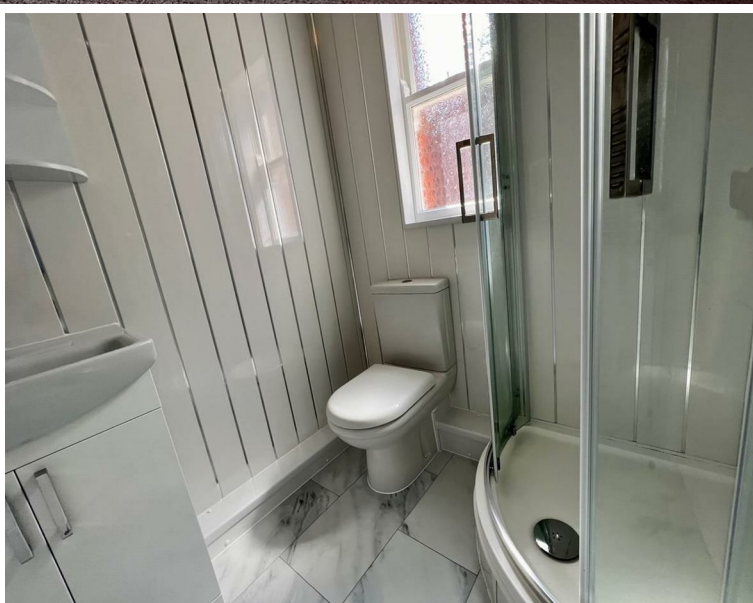
This beautifully presented three bedroom terraced house is located on the Knavesmire overlooking York Racecourse, close to Rowntree Park and the city centre and features a fore courted entrance, entrance hallway which opens up to a large open-plan lounge with bay window and dining room overlooking the spacious courtyard at the rear. This also leads onto the kitchen with integrated white goods including washing machine, dishwasher, fridge/freezer and oven/hob.

As you proceed up the stairs are three bedrooms and an upstairs bathroom. The property is decorated to a tasteful standard and is to be let on an unfurnished basis.

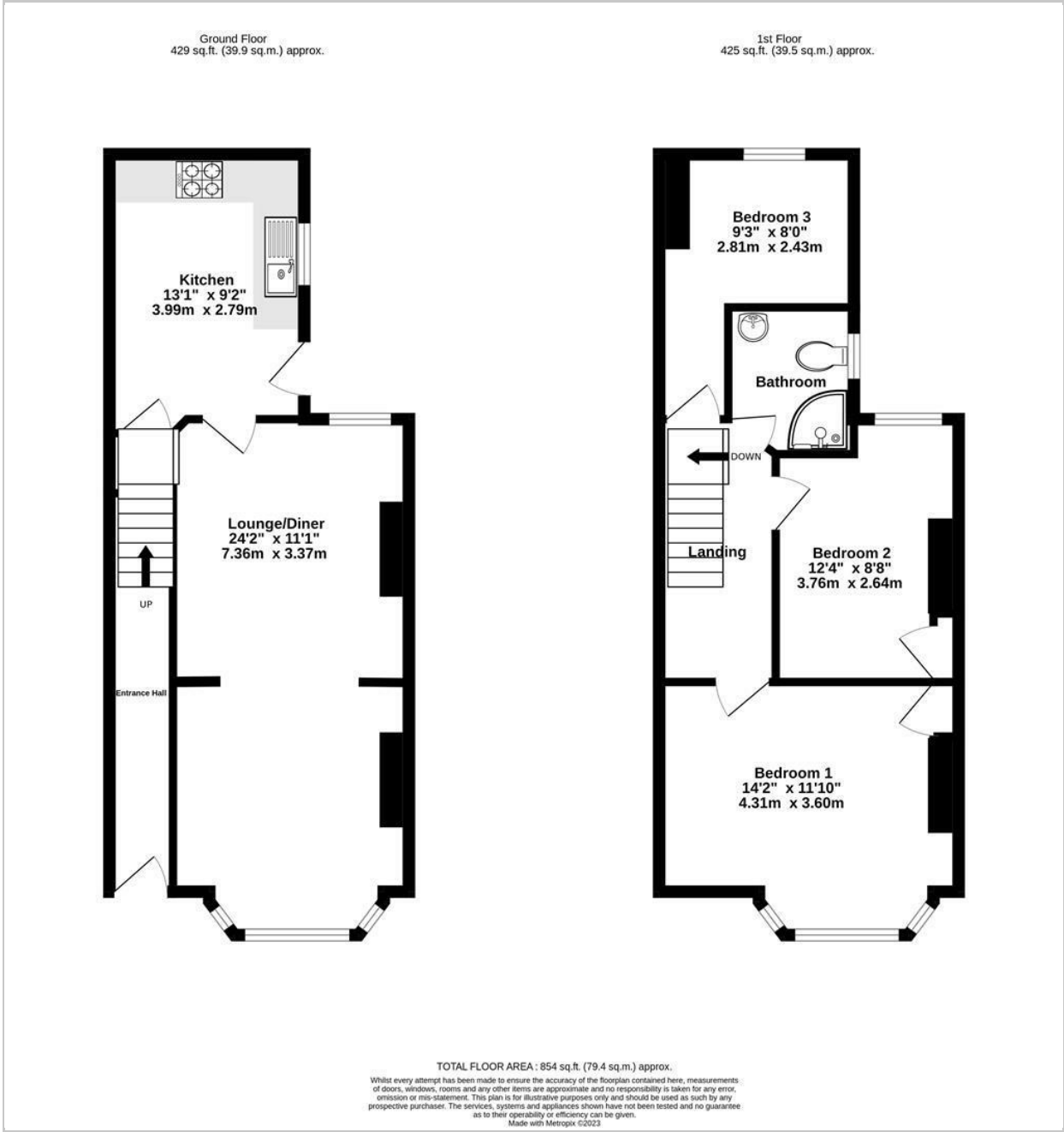
Council Tax Band C.

Pets considered on a case-by-case basis subject to a supplementary rent payment of £50 per month. Sorry no smokers.

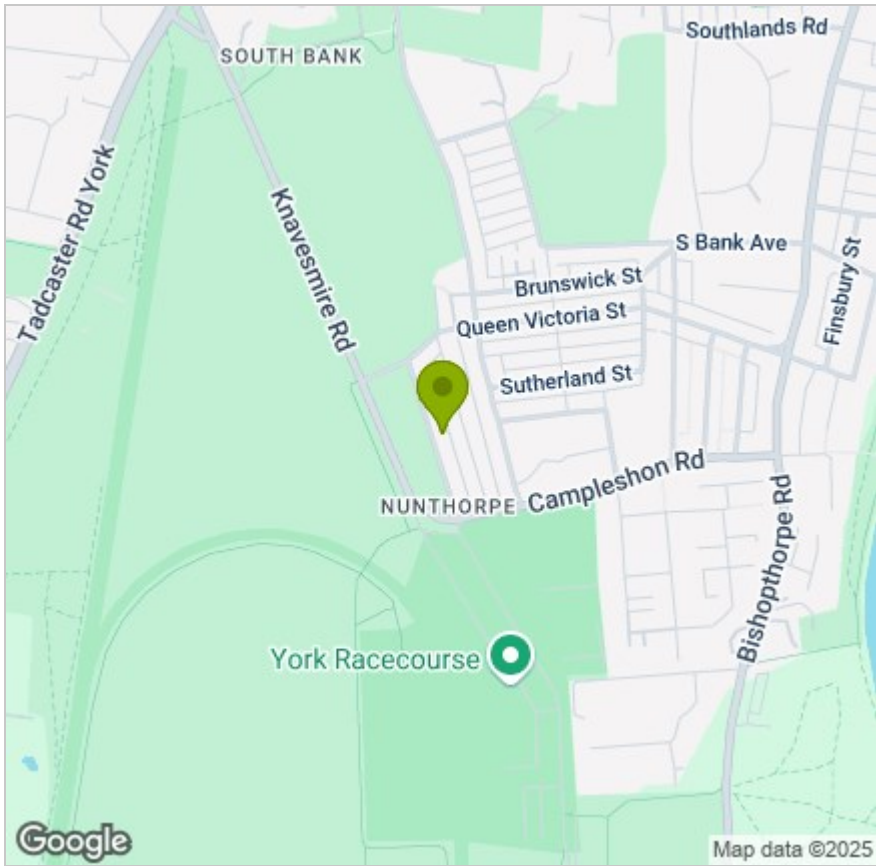




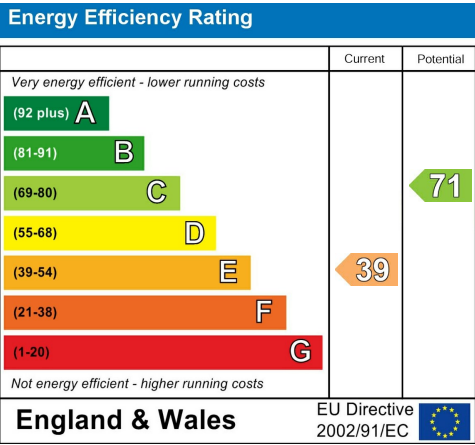
FLOOR PLAN



LOCATION



EPC



These particulars, whilst believed to be accurate are set out as a general outline only for guidance and do not constitute any part of an offer or contract. Intending purchasers should not rely on them as statements of representation of fact, but must satisfy themselves by inspection or otherwise as to their accuracy. No person in this firms employment has the authority to make or give any representation or warranty in respect of the property.